

Edition 2018

K-FLEX®



Application Manual

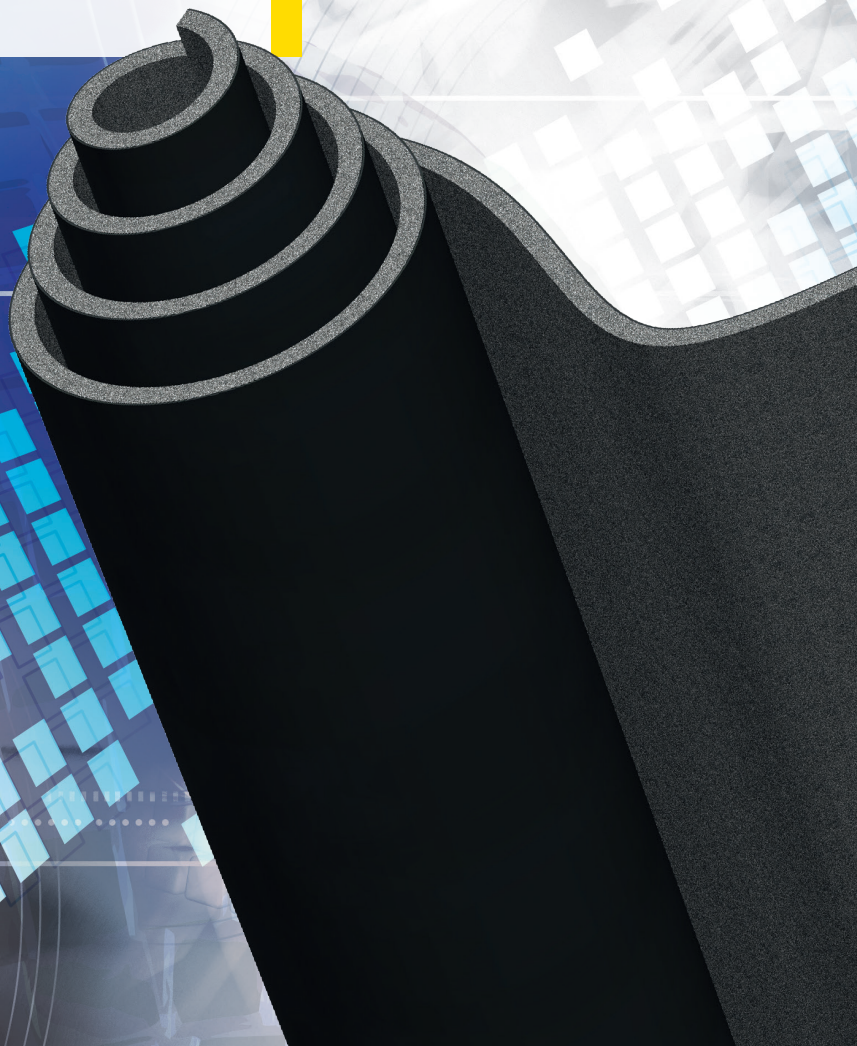


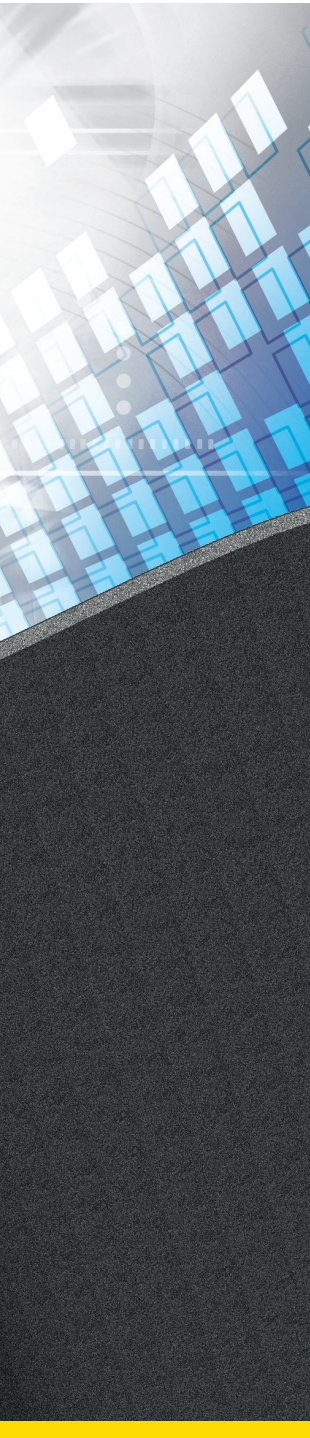
K-FLEX® K-FONIK ST GK



K-FLEX
www.kflex.com

K-FLEX®
APPLICATION MANUAL



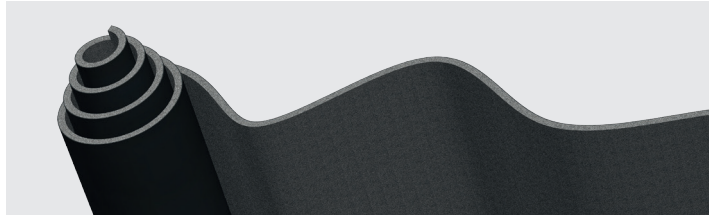


K-FLEX® ▶ APPLICATION MANUAL

Insulating piping for cooling, heating or air-conditioning systems requires a methodical approach, as well as the right tools to do the job properly.

K-FLEX® products are backed up by a comprehensive range of accessories specifically designed to help the installer.

This manual contains a wealth of information and practical tips, along with clear, step-by-step, illustrated instructions to ensure you get the best results quickly and easily.



K-FLEX® K-FONIK ST GK ▶ DESCRIPTION

Smooth elastomeric sound insulation sheet in various thicknesses, coupled with a high density elastomeric sheet.

The product is lead-free and therefore does not represent a health risk.

K-FONIK ST GK combines the features of K-FONIK GK with a layer of elastomeric K-FLEX® ST.

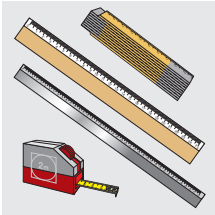
K-FONIK ST GK is ideal for sound insulation of pipelines and drainage systems.

The product is available in different thicknesses, standard or adhesive, with a coating on GK layer (alu or TNT).

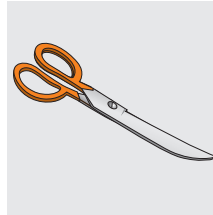
The product is also available as halogen Free, K-FONIK ECO GV.

K-FLEX® ▶ TOOLS

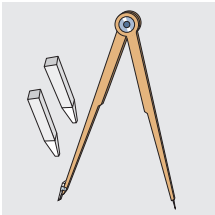
A selection of good tools is essential for carrying out jobs to the highest standards.



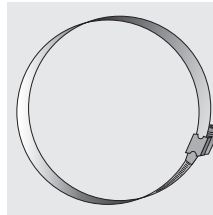
RIGID AND FLEXIBLE TAPE MEASURE
for measuring and tracing lines to cut.



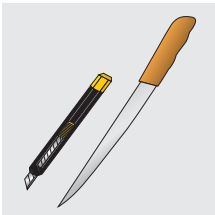
SCISSORS
to facilitate cutting insulating material.



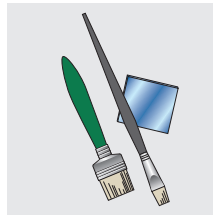
CHALK AND COMPASS
to draw reference lines for measurements and cuts.



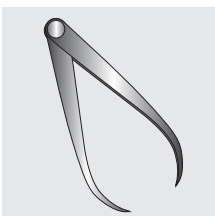
METAL BAND
to help cut insulating sheets at the end of large diameter pipes.



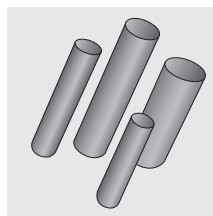
CUTTERS AND KNIVES
use both long and short bladed knives, with spare blades.



BRUSHES (VARIOUS) AND FLEXIBLE SPATULA
for spreading glue and painting.



CALLIPER
for measuring the external diameter of surfaces to be insulated.



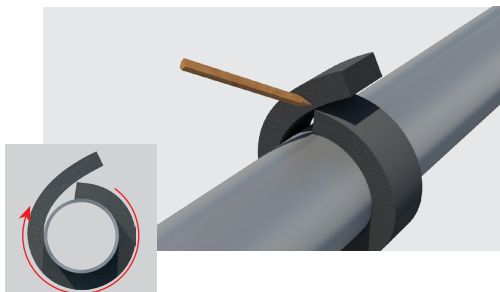
CIRCULAR PUNCHES
with a cutting edge to make holes in the insulation in a range of sizes.

▶ INSTALLATION IN DRAINAGE PIPE SYSTEM

K-FONIK ST GK can be installed in two ways:

- Glued
- Fixed

MEASURING A CIRCUMFERENCE



The measurement is obtained by using a strip of K-FONIK ST GK.

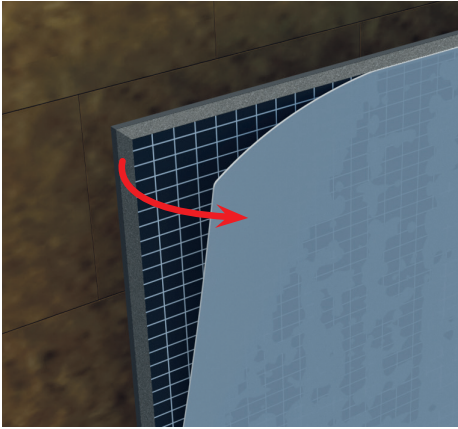
This gives you the measurement of the circumference, including the thickness of the insulating material itself.

Do not stretch the strip when encircling the pipe, as this will alter the measurement.

Mark the strip with chalk where the two edges overlap, if material is glued.

Leave 5cm overlap if material is mechanically fixed.

K-FONIK ST GK is available in standard or adhesive version.

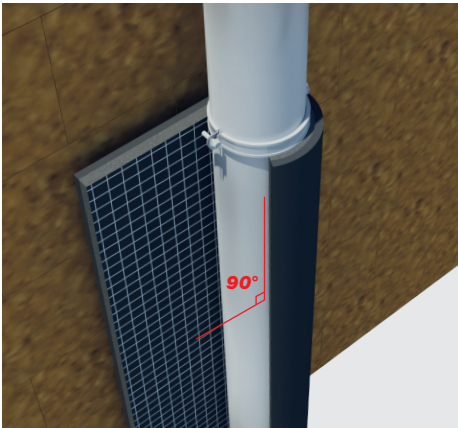


Glueing of standard sheets

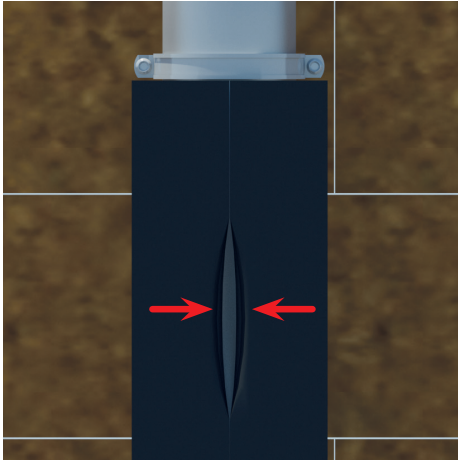
Apply K-FLEX® adhesive on ST layer, on all the edges.

Glueing of adhesive sheets

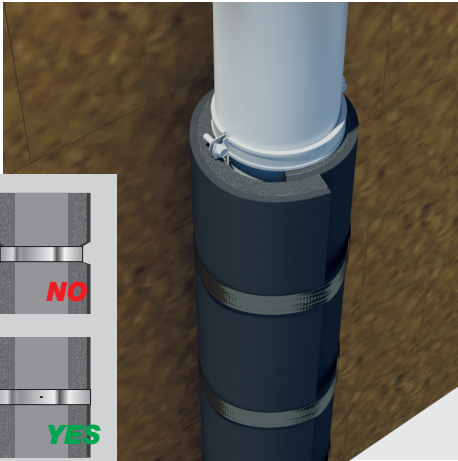
Remove the liner and apply adhesiv on edges only.



Place the sheet on the pipe, aligned to the existing supports.

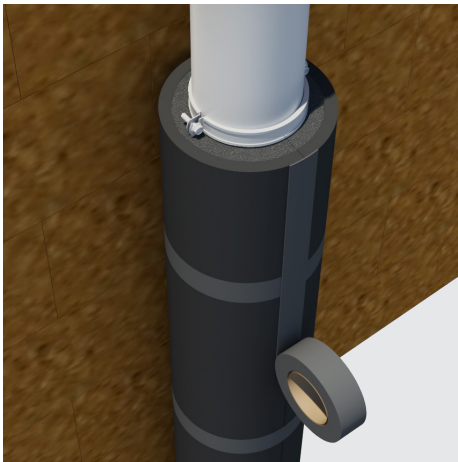


While glueing sheets to the pipe, when attaching the two edges, press them together firmly with your fingers, starting at the far ends, then the centre and lastly along the intermediate points to avoid an irregular joint.



While fixing mechanically, use metallic wire, adhesive tape or nylon strips (approx 6 fixing per meter).

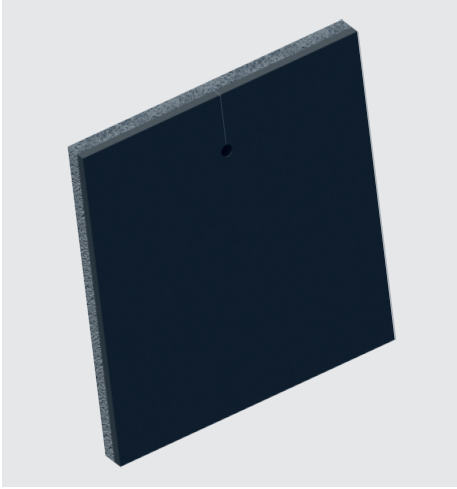
Do not tight to much, to avoid compression of the material.



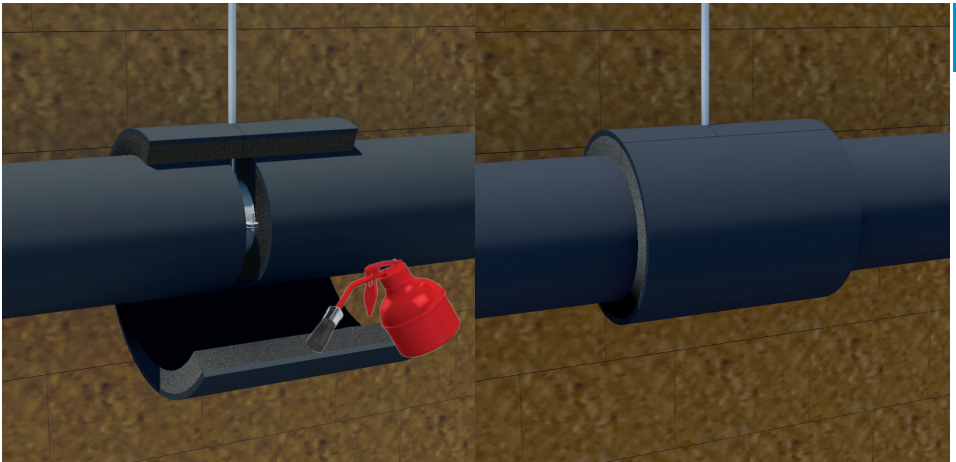
For condensation prevention applications, glue all the edges and cover with adhesive tape.

Pipe support insulation

Measure the circumference and the length of the support. add 5cm overlap each side.

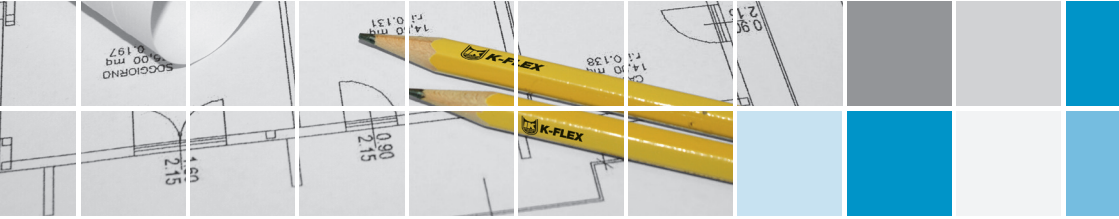


Cut a hole for the screw and apply adhesive.



For insulation of special pieces, K-FLEX® can support the installer with specific templates.

K-FLEX® K-FONIK ST GK APPLICATION MANUAL



L'ISOLANTE K-FLEX S.p.A. Via Don Locatelli, 35 - 20877 Roncello (MB) - Italy
Sales Dept.
internationalsales@isolante.com - tel. +39 039 6824.1
Technical Marketing Dept.
kflex-technical@isolante.com
www.kflex.com